

CMPDM202PH
SURFACE MOUNT
P-CHANNEL
ENHANCEMENT-MODE
SILICON MOSFET



www.centrasemi.com



SOT-23F CASE

DESCRIPTION:

The CENTRAL SEMICONDUCTOR CMPDM202PH is a high current P-channel enhancement-mode silicon MOSFET, manufactured by the P-channel DMOS process, and is designed for high speed pulsed amplifier and driver applications. This MOSFET offers high current, low $r_{DS(ON)}$, low threshold voltage, and low leakage current.

MARKING CODE: 202C

APPLICATIONS:

- Load/Power switches
- Power supply converter circuits
- Battery powered portable equipment

FEATURES:

- Low $r_{DS(ON)}$ (0.093Ω MAX @ $V_{GS}=2.5V$)
- High current ($I_D=2.3A$)
- Logic level compatibility

MAXIMUM RATINGS: ($T_A=25^\circ C$)

Drain-Source Voltage
Gate-Source Voltage
Continuous Drain Current (Steady State)
Maximum Pulsed Drain Current, $t_p=10\mu s$
Power Dissipation
Operating and Storage Junction Temperature
Thermal Resistance

SYMBOL

V_{DS}	20
V_{GS}	12
I_D	2.3
I_{DM}	9.2
P_D	350
T_J, T_{stg}	-55 to +150
θ_{JA}	357

UNITS

V
V
A
A
mW
$^\circ C$
$^\circ C/W$

ELECTRICAL CHARACTERISTICS: ($T_A=25^\circ C$ unless otherwise noted)

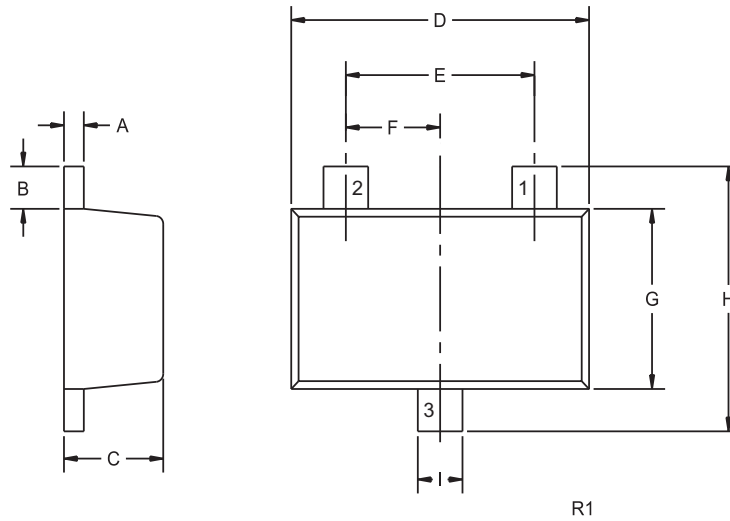
SYMBOL	TEST CONDITIONS	MIN	TYP	MAX	UNITS
I_{GSSF}, I_{GSSR}	$V_{GS}=12V, V_{DS}=0$			100	nA
I_{DSS}	$V_{DS}=20V, V_{GS}=0$			1.0	μA
BV_{DSS}	$V_{GS}=0, I_D=250\mu A$	20			V
$V_{GS(th)}$	$V_{GS}=V_{DS}, I_D=250\mu A$	0.6		1.4	V
$r_{DS(ON)}$	$V_{GS}=5.0V, I_D=1.2A$		0.042	0.088	Ω
$r_{DS(ON)}$	$V_{GS}=2.5V, I_D=1.2A$		0.058	0.093	Ω
g_{FS}	$V_{DS}=5.0V, I_D=2.3A$		15		S
C_{rss}	$V_{DD}=10V, V_{GS}=0, f=1.0MHz$		85		pF
C_{iss}	$V_{DD}=10V, V_{GS}=0, f=1.0MHz$		800		pF
C_{oss}	$V_{DD}=10V, V_{GS}=0, f=1.0MHz$		75		pF
$Q_{g(tot)}$	$V_{DD}=10V, V_{GS}=5.0V, I_D=2.3A$		8.0	12	nC
Q_{gs}	$V_{DD}=10V, V_{GS}=5.0V, I_D=2.3A$		1.3	2.0	nC
Q_{gd}	$V_{DD}=10V, V_{GS}=5.0V, I_D=2.3A$		2.3	3.5	nC
t_{on}	$V_{DD}=10V, I_D=2.3A, R_G=10\Omega$		25		ns
t_{off}	$V_{DD}=10V, I_D=2.3A, R_G=10\Omega$		48		ns

R1 (11-December 2012)

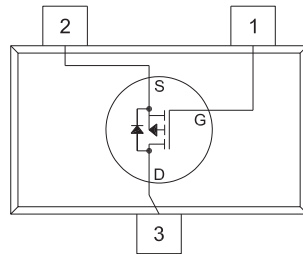
CMPDM202PH
SURFACE MOUNT
P-CHANNEL
ENHANCEMENT-MODE
SILICON MOSFET



SOT-23F CASE - MECHANICAL OUTLINE



PIN CONFIGURATION



SYMBOL	INCHES		MILLIMETERS	
	MIN	MAX	MIN	MAX
A	0.004	0.008	0.10	0.20
B	0.012	0.020	0.30	0.50
C	0.031	0.039	0.80	1.00
D	0.110	0.118	2.80	3.00
E	0.075		1.90	
F	0.037		0.95	
G	0.059	0.067	1.50	1.70
H	0.091	0.098	2.30	2.50
I	0.014	0.018	0.35	0.45

SOT-23F (REV: R1)

LEAD CODE:

- 1) Gate
- 2) Source
- 3) Drain

MARKING CODE: 202C

R1 (11-December 2012)

OUTSTANDING SUPPORT AND SUPERIOR SERVICES



PRODUCT SUPPORT

Central's operations team provides the highest level of support to insure product is delivered on-time.

- Supply management (Customer portals)
- Inventory bonding
- Consolidated shipping options
- Custom bar coding for shipments
- Custom product packing

DESIGNER SUPPORT/SERVICES

Central's applications engineering team is ready to discuss your design challenges. Just ask.

- Free quick ship samples (2nd day air)
- Online technical data and parametric search
- SPICE models
- Custom electrical curves
- Environmental regulation compliance
- Customer specific screening
- Up-screening capabilities
- Special wafer diffusions
- PbSn plating options
- Package details
- Application notes
- Application and design sample kits
- Custom product and package development

CONTACT US

Corporate Headquarters & Customer Support Team

Central Semiconductor Corp.
145 Adams Avenue
Hauppauge, NY 11788 USA
Main Tel: (631) 435-1110
Main Fax: (631) 435-1824
Support Team Fax: (631) 435-3388
www.centalsemi.com

Worldwide Field Representatives:
www.centalsemi.com/wwreps

Worldwide Distributors:
www.centalsemi.com/wwdistributors

For the latest version of Central Semiconductor's **LIMITATIONS AND DAMAGES DISCLAIMER**, which is part of Central's Standard Terms and Conditions of sale, visit: www.centalsemi.com/terms