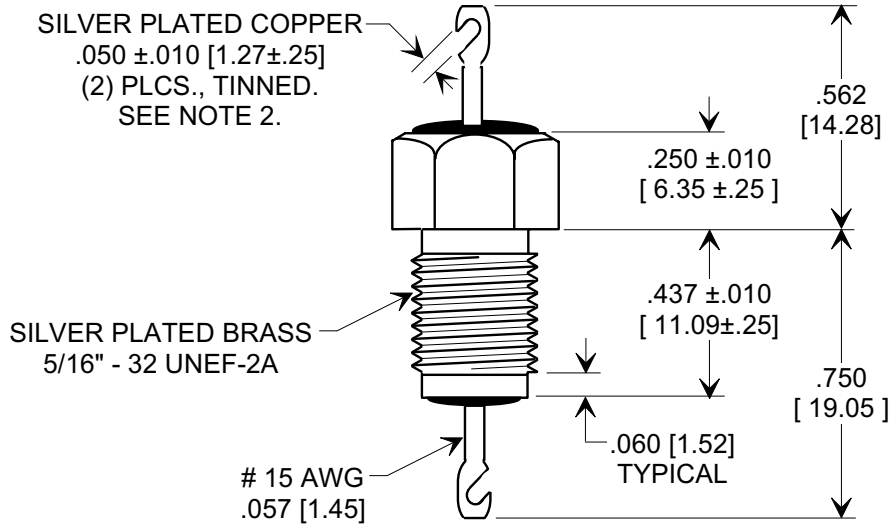
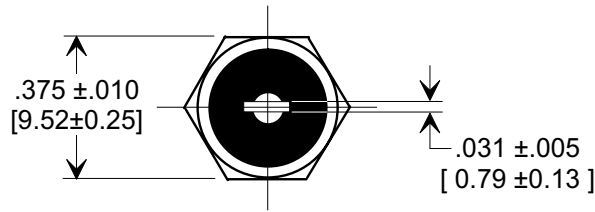
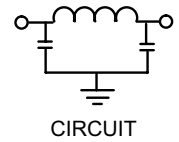
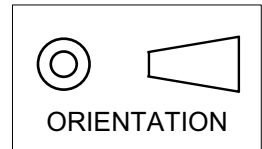


MARKETING SALES DRAWING

DIMENSIONS IN INCHES - DO NOT SCALE THIS DRAWING
DIMENSIONS IN METRIC - []

Electrical Testing
per Tusonix standard
test plans and Mil-Std-202
Test Methods.



NOTES:

1. TUSONIX STANDARD PART NUMBER: 4206-016.
TUSONIX RoHS COMPLIANT PART NUMBER: 4206-016 LF.
CUSTOMER MUST SPECIFY STANDARD OR RoHS PART NUMBER WHEN ORDERING.
2. LEAD FINISH: SILVER PLATED SOLDER DIPPED. RoHS PARTS ARE DIPPED IN LF SOLDER.
3. PART MARKING: TRADEMARK AND VARIATION NUMBER ON HEX FLATS.
STANDARD PART: BLACK INK. RoHS PART: GREEN INK.
4. SUPPLIED WITH SILVER PLATED COPPER ALLOY HEX NUT AND INTERNAL TOOTH LOCK WASHER.

1000 MIN.	1000	----	25 A	3	35	65	65
	85 °C	125 °C		10 MHz	100 MHz	1 GHz	10 GHz
CAP. (pF)	WORKING VOLTAGE DC (V)		CURRENT dc (A)	MINIMUM NO LOAD INSERTION LOSS (dB) AT 25°C PER MIL-STD -220			

X-2015 Rev-0 REVISION RECORD Original Release C.O. 2000126-1-01 ADDED NOTES 1-3 & CIRCUIT. S.M. 10-26-05 20051006-1-23	0	1	TOLERANCES unless otherwise specified 2 PLC. DECIMAL ±		Title <h2 style="text-align: center;">EMI LOW PASS FILTER</h2>	
	3 PLC. DECIMAL ± .031 [.78]		Drawn S.M. 01-27-00	Scale 2 X		
	ANGLES ±		Approved H.R. 01-27-00		<h1 style="text-align: center;">A</h1> <h2 style="text-align: center;">4206-016</h2>	
	<h1 style="margin: 0;">TUSONIX</h1> TUCSON, ARIZONA					